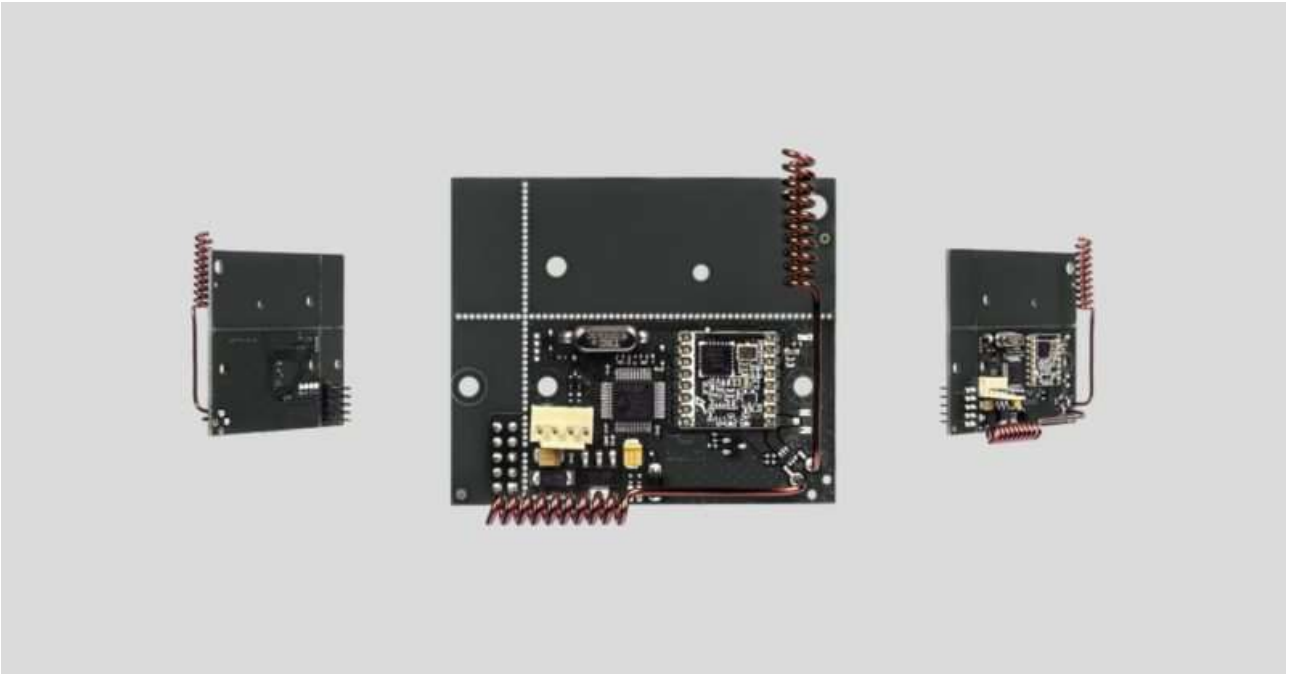


# uartBridge user manual

Updated December 11, 2019



**uartBridge** — is the module for integration with third-party wireless security and smart home systems.

A wireless network of smart and secure Ajax detectors can be added to a third-party security or smart home system through the UART interface.



[Buy uartBridge](#)

## Supported sensors:

- [MotionProtect](#) ([MotionProtect Plus](#))
- [DoorProtect](#)
- [SpaceControl](#)
- [GlassProtect](#)
- [CombiProtect](#)

- [FireProtect \(FireProtect Plus\)](#)
- [LeaksProtect](#)

Integration with third-party detectors is implemented at protocol level.



## [uartBridge communication protocol](#)

### Tech specs

Communication interface with central unit	UART (speed 57,600 Bd)
Use	Indoor
Radio signal power	25 mW
Communication protocol	<a href="#">Jeweller</a> (868.0–868.6 MHz)
The maximum distance between a wireless detector and uartBridge receiver	Up to 2,000 m (in open area)
Maximum number of connected devices	85
Detection of jamming	Yes
Software update	Yes
Detector performance monitoring	Yes
Power supply voltage	DC 5 V (from the UART interface)
Operating temperature range	From -10°C to +40°C
Operating humidity	Up to 90%
Dimensions	64 x 55 x 13 mm (without antennas) 110 x 58 x 13 mm (with antennas)

